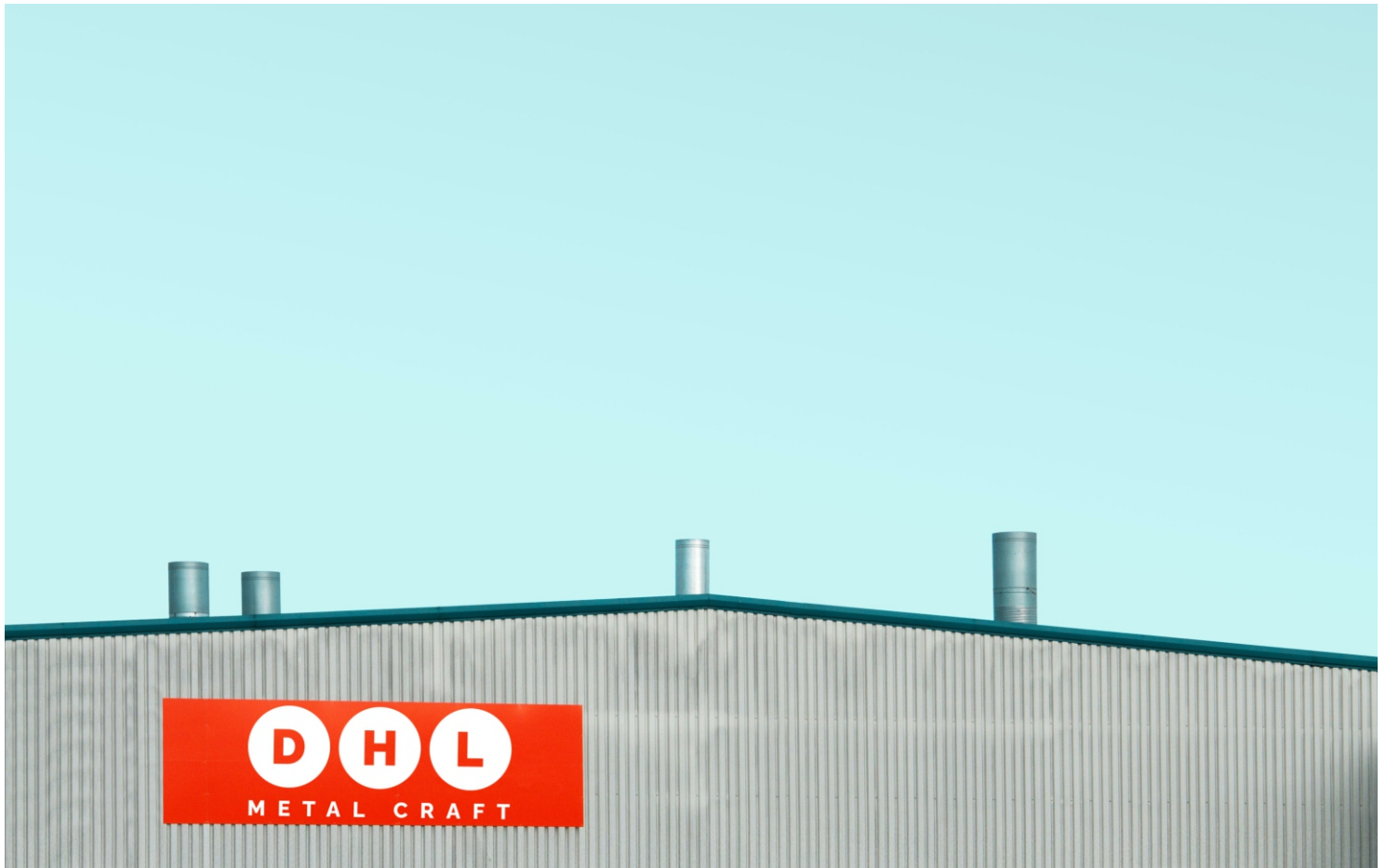




DHL METAL CRAFT



If you are looking for a specially engineered components or assembly but don't have the resources or expertise to design and manufacturer it yourself. DHL Metal Craft Industries offers a complete design, engineering & manufacturing service, to translate your idea and concept into volume production.

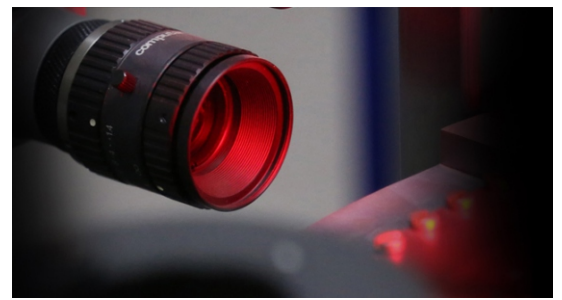
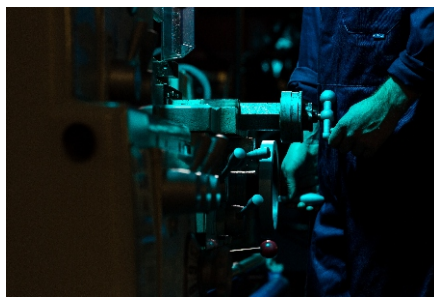
SPECIALIZED IN CUSTOMISED SOLUTIONS



“ To Help Ecosystem, thrive safely through innovative ideas by providing customised solutions.”

Regardless of how complex is your design. Assembling or quality challenge. Our mission is to provide you with the most efficient, innovative & cost effective services.

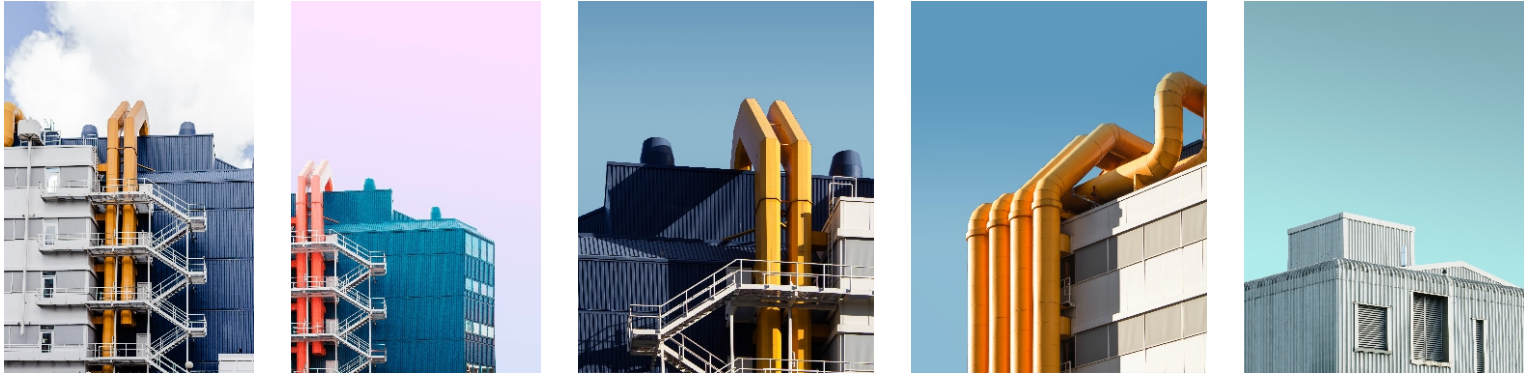
QUALITY ASSURANCE



An ISO 9001 2015 Certification Gives an assurance to our customer that our process will meet rigid international manufacturing and delivery standards. our experiance. well defined process inspection at all stages allow us to meet our goal of getting it right the first time and every time.

Our Quality Testing Facilities Includes type of testing equipments such as Mitutoyo surface roughness Tester Dyna scan Vertical Profie Projector sipcan 3D Measuring Machine. Technofour Conductivity Testing Machine Spectromax.

INFRASTRUCTURE & OUR STORY



DHL Metal Craft Industries was established in 1996 and get immense success under the leadership of expert peoples. though to sustain in the brass metal product industry is not easy, he set the example by making the company best and distuished brass metal product maker and Exporter.

With the extensive experience in the field of brass metal, we hold excellent product quality, customer services, compliance, commitment, and most effective rate structure. the quality of the electrical brass parts, brass fitting parts, brass precision components etc. brass round the bend and bolts concerned enterprise and it has been engaged in bringing the top - grade brass metal products since 1996 with infrastructure in 100,000 sq ft & 500+ employees.

the offered products are manufactured under the best crew of professionals using the top - notch quality assured brass material. we are leaders in our brass metal manufacturing field and are involved to make an extensive range of brass metal products.

BRASS COMPRESSION FITTINGS



Compression Fittings are one of the most common and versatile methods of connecting metal or hard plastic tubing. particularly useful for their extreme temperature and pressure capabilities, and their compatibility with aggressive fluids, compression fittings can be seen in system varying from gas Lines in refineries, to the plumbing under your sink

COMPRESSION SLEEVE

No	Size
1	1/8" Sleeve
2	3/16" Sleeve
3	1/4" Sleeve
4	5/16" Sleeve
5	3/8" Sleeve
6	7/16" Sleeve
7	1/2" Sleeve
8	5/8" Sleeve



Brass Compression sleeves also known as ferrules, rings or O-rings are used in combination with a compression nut and fitting to create a watertight connection on copper and brass pipe or tubing

COMPRESSION NUT

No	Size
1	1/8" Nut
2	3/16" Nut
3	1/4" Nut
4	5/16" Nut
5	3/8" Nut
6	7/16" Nut
7	1/2" Nut
8	5/8" Nut



A Compression fitting is a type of coupling used to connect two pipes or a pipe to a fixture or valve.....as the nut is tightened, the compression ring is pressed into the seat, causing it to compress against the pipe and the compression nut, providing a watertight connection.

LONG NUT

No	Size
1	1/4" Long Nut
2	5/16" Long Nut
3	3/8" Long Nut
4	1/2" Long Nut
5	5/8" Long Nut



Flare fittings are suitable for use in the plumbing and heating industries for gas, oil, air, and water. they are applicable with brass, tubing, flare fittings can be disassembled and reassembled many times with no effect on the seal.

BRASS INSERT

No	Size
1	1/8" Brass Insert
2	3/16" Brass Insert
3	1/4" Brass Insert
4	5/16" Brass Insert
5	3/8" Brass Insert
6	1/2" Brass Insert
7	5/8" Brass Insert



It is typically used on gasoline, grease, oil, water, vacuum and air line applications. The compression sleeve and insert are not recommended for use with steel.

CAP NUT

No	Size
1	3/16" Cap Nut
2	1/4" Cap Nut
3	5/16" Cap Nut
4	3/8" Cap Nut
5	1/2" Cap Nut



Commonly used to connect lines for air, water, fuel, oil and inert gases in a quick and simple way.

SHORT NUT

No	Size
1	1/8" Short Nut
2	3/16" Short Nut
3	1/4" Short Nut
4	5/16" Short Nut
5	3/8" Short Nut
6	1/2" Short Nut



Flare fittings are suitable for use in the plumbing and heating industries for gas, oil, air, and water. they are applicable with brass, tubing, flare fittings can be disassembled and reassembled many times with no effect on the seal.

UNION

No	Size
1	1/8" Union
2	3/16" Union
3	1/4" Union
4	5/16" Union
5	3/8" Union
6	7/16" Union
7	1/2" Union
8	5/8" Union



Compression fittings work best when tightened once and not disturbed....this connector is directly placed over the pipe and the nut is tightened compressing the ferrule between the pipe and the body of the fitting. compression of this ferrule also result in deformation of the copper tubing.

FEMALE CONNECTOR

No	Size
1	1/8 x 1/8" Female Connector
2	3/16 x 1/8" Female Connector
3	3/16 x 1/4" Female Connector
4	1/4 x 1/8" Female Connector
5	1/4 x 1/4" Female Connector
6	5/16 x 1/8" Female Connector
7	5/16 x 1/4" Female Connector
8	3/8 x 1/8" Female Connector
9	3/8 x 1/4" Female Connector
10	3/8 x 3/8" Female Connector
11	3/8 x 1/2" Female Connector
12	7/16 x 3/8" Female Connector
13	1/2 x 1/4" Female Connector
14	1/2 x 3/8" Female Connector
15	1/2 x 1/2" Female Connector
16	3/8 x 1/2" Female Connector



Compression fittings NPT Female connectors are used for straight tube to NPT female port connections.

REDUCING UNION

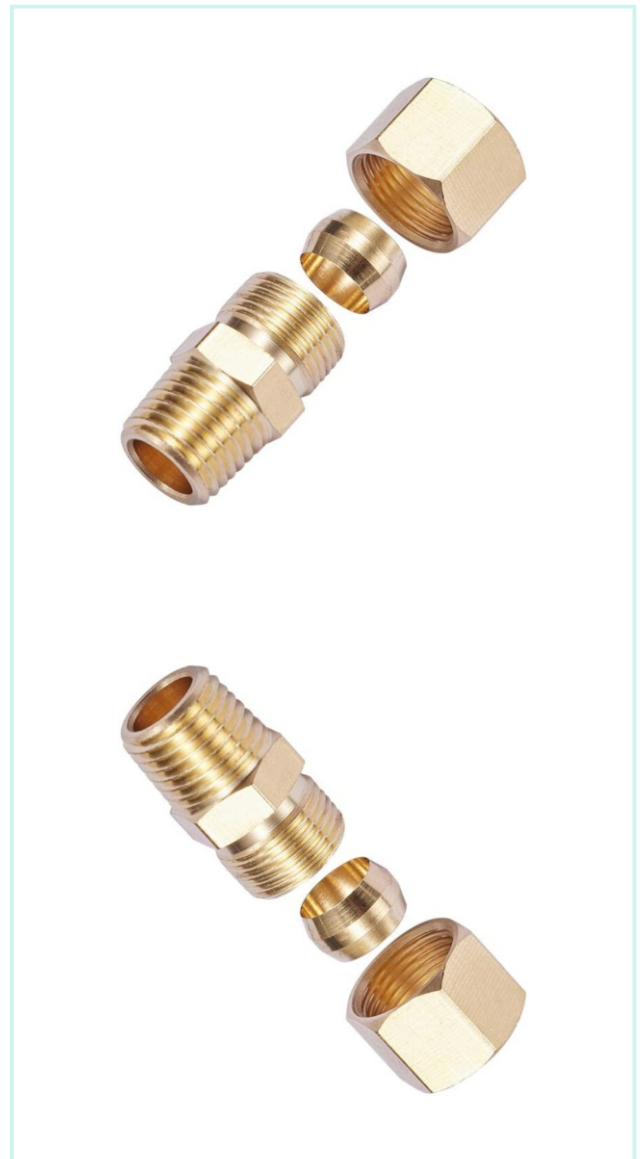
No	Size
1	3/16 x 1/4" Reducing Union
2	1/4 x 3/8" Reducing Union
3	3/8 x 1/2" Reducing Union
4	3/8 x 5/8" Reducing Union



Compression fittings Reducing unions are used for straight tube port to port connections. One end of the tube port is reduced.

MALE CONNECTOR

No	Size
1	1/8 x 1/8" Male Connector
2	3/16 x 1/8" Male Connector
3	3/16 x 1/4" Male Connector
4	1/4 x 1/8" Male Connector
5	1/4 x 1/4" Male Connector
6	1/4 x 3/8" Male Connector
7	1/4 x 1/2" Male Connector
8	5/16 x 1/8" Male Connector
9	5/16 x 1/4" Male Connector
10	3/8 x 1/8" Male Connector
11	3/8 x 1/4" Male Connector
12	3/8 x 3/8" Male Connector
13	3/8 x 1/2" Male Connector
14	1/2 x 1/4" Male Connector
15	1/2 x 3/8" Male Connector
16	1/2 x 1/2" Male Connector
17	5/8 x 3/8" Male Connector
18	5/8 x 1/2" Male Connector



Compression fittings NPT male connectors are used for straight tube to NPT male port connections.

BRASS PIPE FITTINGS



Brass Pipe Fittings are commonly used for civil construction, chemical, flammable gases, slurries, irrigation, and other plumbing work..... it can effectively control gas and liquid in the pipe and lasts for years.

HEX NIPPLE

No	Size
1	1/8" Hex Nipple
2	1/4" Hex Nipple
3	3/8" Hex Nipple
4	1/2" Hex Nipple



NPT Hex Nipple are hex nipple with male thread at the both end to connect with female thread of system.

COUPLING

No	Size
1	1/8" Coupling
2	1/4" Coupling
3	3/8" Coupling
4	1/2" Coupling



A Coupling (or Couple) (used in piping or plumbing) is a very short length of pipe or tube, with a socket at one or both ends that allows two pipes or tubes to be joined, welded (steel), brazed or soldered (brass) together.

CORED HEX HEAD PLUG

No	Size
1	1/8" Cored Hex Head Plug
2	1/4" Cored Hex Head Plug
3	3/8" Cored Hex Head Plug
4	1/2" Cored Hex Head Plug



The cored hex-head plug fitting inserts into a pipe or fitting to close and terminate its end. it has male Natinal Pipe Taper (NPT) threads for connecting to female threaded pipes, creating a tighter seal than straight threads.

SQUARE HEAD PLUG

No	Size
1	1/8" Square Head Plug
2	1/4" Square Head Plug
3	3/8" Square Head Plug
4	1/2" Square Head Plug



The head plug pipe fitting is made of brass and has a male National Pipe Taper (NPT) threaded connection. This solid square head plug fitting inserts into a pipe or fitting to close and terminate its end and has a square head for an increased bearing surface when adjusting with a wrench.

COUNTER SUNK PLUG

No	Size
1	1/8" Counter Sunk Plug
2	1/4" Counter Sunk Plug
3	3/8" Counter Sunk Plug
4	1/2" Counter Sunk Plug



The counter sunk plug is a brass fitting with FNPT connections for use in water, oil, natural gas, and steam applications.

HEX BUSHING

No	Size
1	1/4 x 1/8" Hex Bushing
2	3/8 x 1/8" Hex Bushing
3	3/8 x 1/4" Hex Bushing
4	1/2 x 1/8" Hex Bushing
5	1/2 x 1/4" Hex Bushing
6	1/2 x 3/8" Hex Bushing



This Hex bushing is recommended for use with brass, copper, or iron pipe. It is made of brass for strength, durability and rust resistance. It is typically used in oil, natural gas, water and air line application.

PIPE CAP

No	Size
1	1/4" Pipe Cap
2	3/8" Pipe Cap
3	5/8" Pipe Cap
4	1/2" Pipe Cap



Brass pipe thread caps are used to close off the end of a pipe, they are generally used as a long term fix.

CLOSE NIPPLE

No	Size
1	1/8" Close Nipple
2	1/4" Close Nipple
3	3/8" Close Nipple
4	1/2" Close Nipple



In Plumbing and piping, a nipple is a fitting, consisting of a short piece of pipe, usually provided with a male pipe thread at each end, for connecting two other fittings....A “close nipple” has no unthreaded area, when screwed tightly between two female fittings, very little of the nipple remains exposed.

LONG NIPPLE

No	Size
1	1/8 x 1.5" Long Nipple
2	1/8 x 2" Long Nipple
3	1/8 x 2.5" Long Nipple
4	1/8 x 3" Long Nipple
5	1/8 x 3.5" Long Nipple
6	1/8 x 4" Long Nipple
7	1/4 x 1.5" Long Nipple
8	1/4 x 2" Long Nipple
9	1/4 x 2.5" Long Nipple
10	1/4 x 3" Long Nipple
11	1/4 x 3.5" Long Nipple
12	1/4 x 4" Long Nipple
13	3/8 x 1.5" Long Nipple
14	3/8 x 2" Long Nipple
15	3/8 x 2.5" Long Nipple
16	3/8 x 3" Long Nipple
17	3/8 x 3.5" Long Nipple
18	3/8 x 4" Long Nipple
19	1/2 x 1.5" Long Nipple
20	1/2 x 2" Long Nipple
21	1/2 x 2.5" Long Nipple
22	1/2 x 3" Long Nipple
23	1/2 x 3.5" Long Nipple
24	1/2 x 4" Long Nipple



The long nipple is a longer version than the short, and is threaded on both ends with an expanse of plain unthreaded surface in the middle.

REDUCING HEX NIPPLE

No	Size
1	1/4 x 1/8" Reducing Hex Nipple
2	3/8 x 1/8" Reducing Hex Nipple
3	3/8 x 1/4" Reducing Hex Nipple
4	1/2 x 1/4" Reducing Hex Nipple
5	1/2 x 3/8" Reducing Hex Nipple



The reducing hex nipple pipe fitting is made of brass and has male national Pipe Taper (NPT) threaded connections....It has male NPT threads for connecting to female threaded pipes, creating a tighter seal than straight threads.

REDUCING COUPLING

No	Size
1	1/4 x 1/8" Reducing Coupling
2	3/8 x 1/8" Reducing Coupling
3	3/8 x 1/4" Reducing Coupling
4	1/2 x 1/4" Reducing Coupling
5	1/2 x 3/8" Reducing Coupling



A reducing coupling is designed to accept pipes into either end. For Example a 15mm to 10mm reducing coupling accepts a 15mm pipe into one end and 10mm pipe into the other. A 15mm to 10mm fitting reducer accepts a 10mm pipe into one end and the other end goes inside a 15mm fitting such as an elbow or coupling.

ADAPTER

No	Size
1	1/4 x 1/8" Adapter
2	1/4 x 1/4" Adapter
3	3/8 x 1/8" Adapter
4	3/8 x 1/8" Adapter
5	3/8 x 1/4" Adapter
6	1/2 x 1/4" Adapter
7	1/2 x 3/8" Adapter
8	1/2 x 1/2" Adapter



With a high resistance to corrosives such as water, heat, saltwater, minerals, chemicals, and soils, brass adapters provide a strong and trusted fit for your hydraulic applications.

HOSE BARB TO MALE PIPE



A hose barb is defined as one or more continuous ridges or bumps on a fitting that are used to grip the inside diameter of a tube and seal the connection. As a tube is installed on the fitting, it expands over the barb. grip and seal occur as the tube tries to relax to its original inside diameter behind the barb.

HOSE BARB TO MALE PIPE

No	Size
1	1/8 x 1/8" Mpt
2	3/16 x 1/8" Mpt
3	3/16 x 1/4" Mpt
4	1/4 x 1/8" Mpt
5	1/4 x 1/4" Mpt
6	1/4 x 3/8" Mpt
7	1/4 x 1/2" Mpt
8	5/16 x 1/8" Mpt
9	5/16 x 1/4" Mpt
10	5/16 x 3/8" Mpt
11	3/8 x 1/8" Mpt
12	3/8 x 1/4" Mpt
13	3/8 x 3/8" Mpt
14	3/8 x 1/2" Mpt
15	1/2 x 1/4" Mpt
16	1/2 x 3/8" Mpt
17	1/2 x 1/2" Mpt
18	5/8 x 3/8" Mpt
19	5/8 x 1/2" Mpt



A hose barb is defined as one or more continuous ridger or bumps on a fitting that are used to grip the inside diameter of a tube and seal the connection. As a tube is installed on the fitting, it expands over the barb. grip and seal occur as the tube tries to relax to its original inside diameter behind the barb.

HOSE BARB TO FEMALE PIPE

No	Size
1	1/4 x 1/8" Mpt
2	1/4 x 1/4" Mpt
3	5/16 x 1/4" Mpt
4	3/8 x 1/8" Mpt
5	3/8 x 1/4" Mpt
6	3/8 x 3/8" Mpt
7	1/2 x 3/8" Mpt
8	1/2 x 1/2" Mpt



A hose barb is defined as one or more continuous ridger or bumps on a fitting that are used to grip the inside diameter of a tube and seal the connection. As a tube is installed on the fitting, it expands over the barb. grip and seal occur as the tube tries to relax to its original inside diameter behind the barb.

HOSE MENDER

No	Size
1	5/16" Mender
2	1/4" Mender
3	5/16" Mender
4	3/8" Mender
5	1/2" Mender
6	5/8" Mender



The handy hose mender doubles as an extender for connection two lengths of hose to create a longer run.

OUR VISION

By 2030 **DHL Metal Craft Industries** will be a multi - National Company Subsidiary in USA & Italy. Head Quarters in india

The Manufacturing Process Will be Fully Customised to Overcome Humans Errors.

A Strong and Dedicated R & D Team to Focus on New Ideas and Innovation.

DHL Metal Craft will be Well Known Brand Name around the world & it will signify Innovation and quality Products.

DHL Metal Craft will be stock Listed Company.



Plot No. 4064, Road I, Phase - 3,
Dared, Jamnagar - 361 005



info@dhlmetalcraft.com



+91 91067 56157



www.dhlmetalcraft.com

Thank you