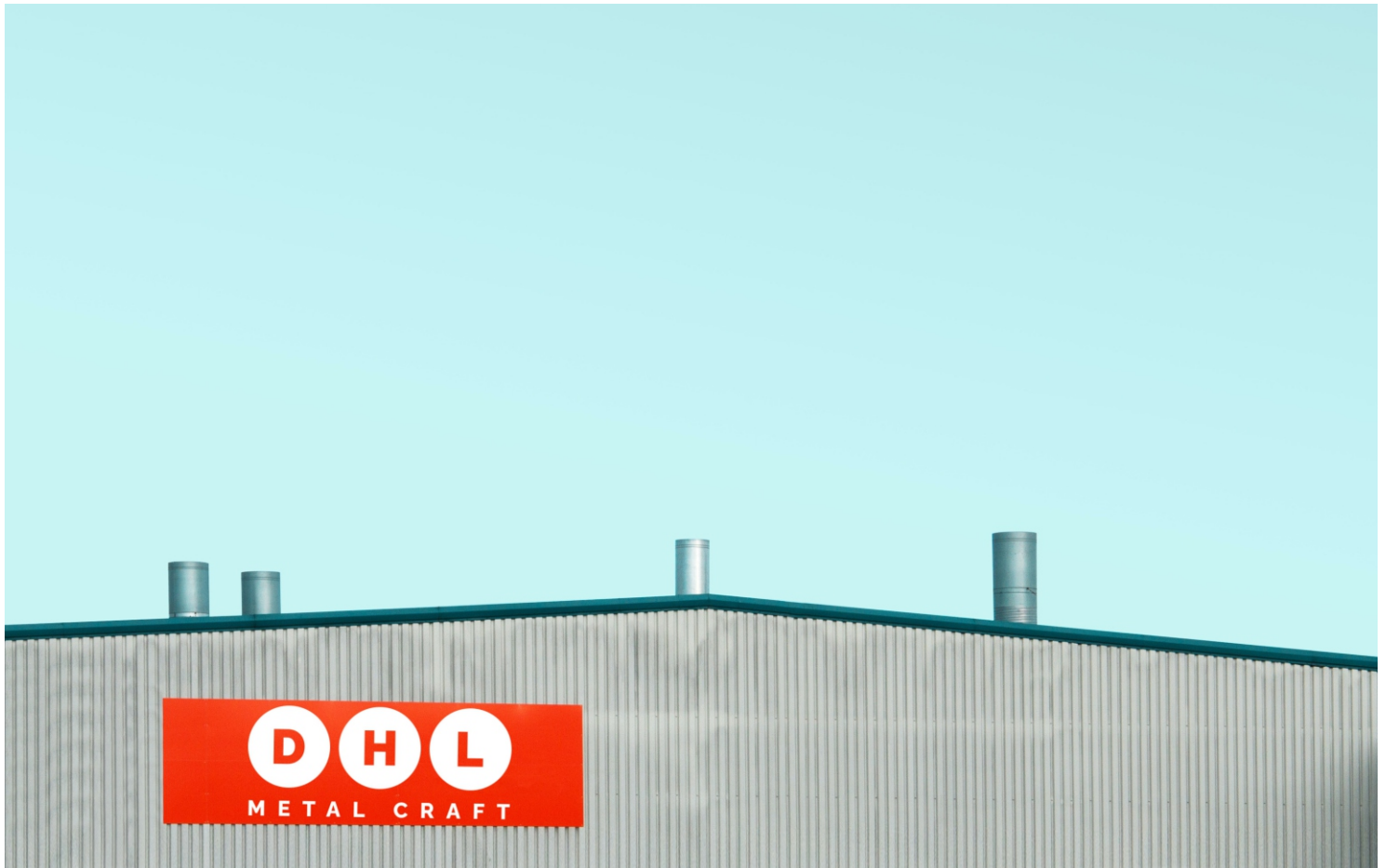




## DHL METAL CRAFT



If you are looking for a specially engineered components or assembly but don't have the resources or expertise to design and manufacturer it yourself. DHL Metal Craft Industries offers a complete design, engineering & manufacturing service, to translate your idea and concept into volume production.

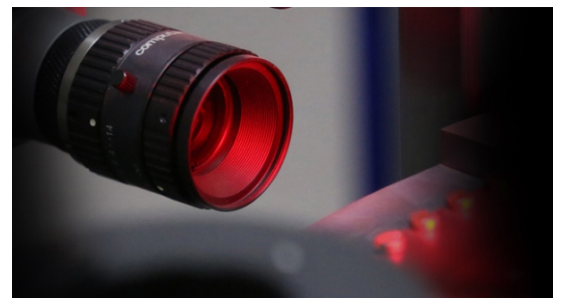
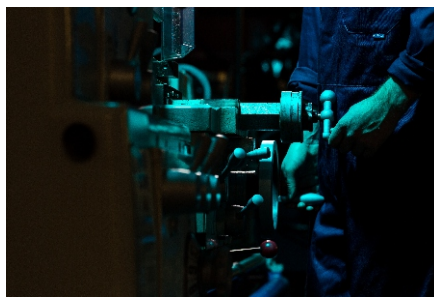
## SPECIALIZED IN CUSTOMISED SOLUTIONS



“ To Help Ecosystem, thrive safely through innovative ideas by providing customised solutions.”

Regardless of how complex is your design. Assembling or quality challenge. Our mission is to provide you with the most efficient, innovative & cost effective services.

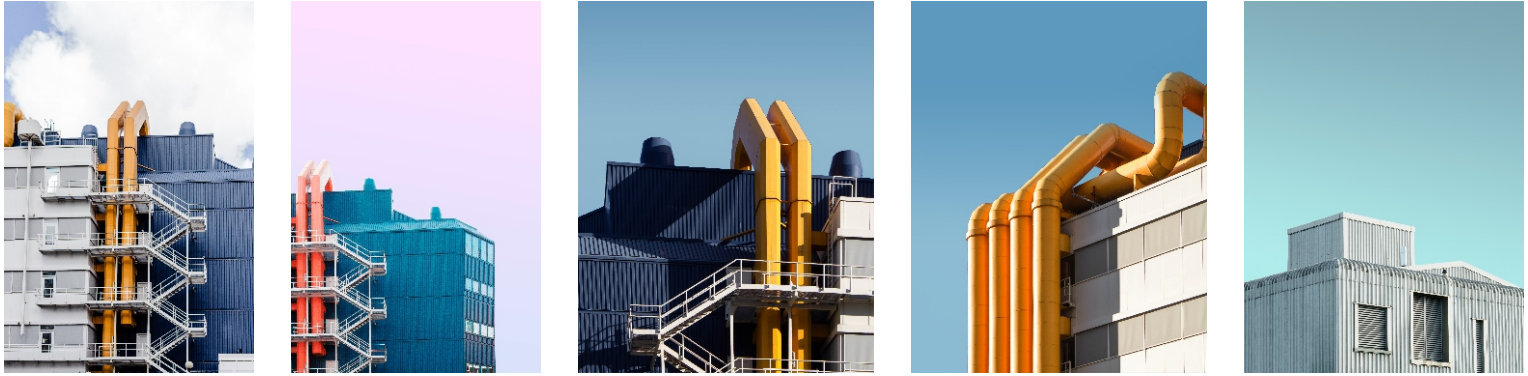
## QUALITY ASSURANCE



An ISO 9001 2015 Certification Gives an assurance to our customer that our process will meet rigid international manufacturing and delivery standards. our experiance. well defined process inspection at all stages allow us to meet our goal of getting it right the first time and every time.

Our Quality Testing Facilities Includes type of testing equipments such as Mitutoyo surface roughness Tester Dyna scan Vertical Profie Projector sipcan 3D Measuring Machine. Technofour Conductivity Testing Machine Spectromax.

## INFRASTRUCTURE &amp; OUR STORY



**DHL Metal Craft Industries** was established in 1996 and get immense success under the leadership of expert peoples. though to sustain in the brass metal product industry is not easy, he set the example by making the company best and distuished brass metal product maker and Exporter.

With the extensive experience in the field of brass metal, we hold excellent product quality, customer services, compliance, commitment, and most effective rate structure. the quality of the electrical brass parts, brass fitting parts, brass precision components etc. brass round the bend and bolts concerned enterprise and it has been engaged in bringing the top - grade brass metal products since 1996 with infrastructure in 100,000 sq ft & 500+ employees.

the offered products are manufactured under the best crew of professionals using the top - notch quality assured brass material. we are leaders in our brass metal manufacturing field and are involved to make an extensive range of brass metal products.

### BUSINESS PROCESS



01  
Reception

02  
Raw Material



04  
Machining

03  
Level 1  
Incoming  
Quality Check



05  
Level 2  
Online  
Quality Check

06  
Component



08  
Packing

07  
Finishing



09  
Level 3  
Pre-Dispatch  
Quality Check

10  
Shipment



**CAPABILITIES**



**Process we Undertake**

Turning, Forging, Sheet Cutting,  
Sand Casting, Broaching, Annealing

**Metal We Treat**

Brass, Copper, Steel, Aluminum

**Size We Handle**

Circumscribed Diameter 1.50mm to 200mm

**Length We Handle**

Turning Length 400mm



**Finish We Serve**

Nickel, Tin, Zinc, Silver, Gold, Chrome, Lead

**Tolerance we Maintain**

Upto 0.01mm

**Surface Roughness**

Ra – up to 0.40 $\mu$



ELECTRICAL



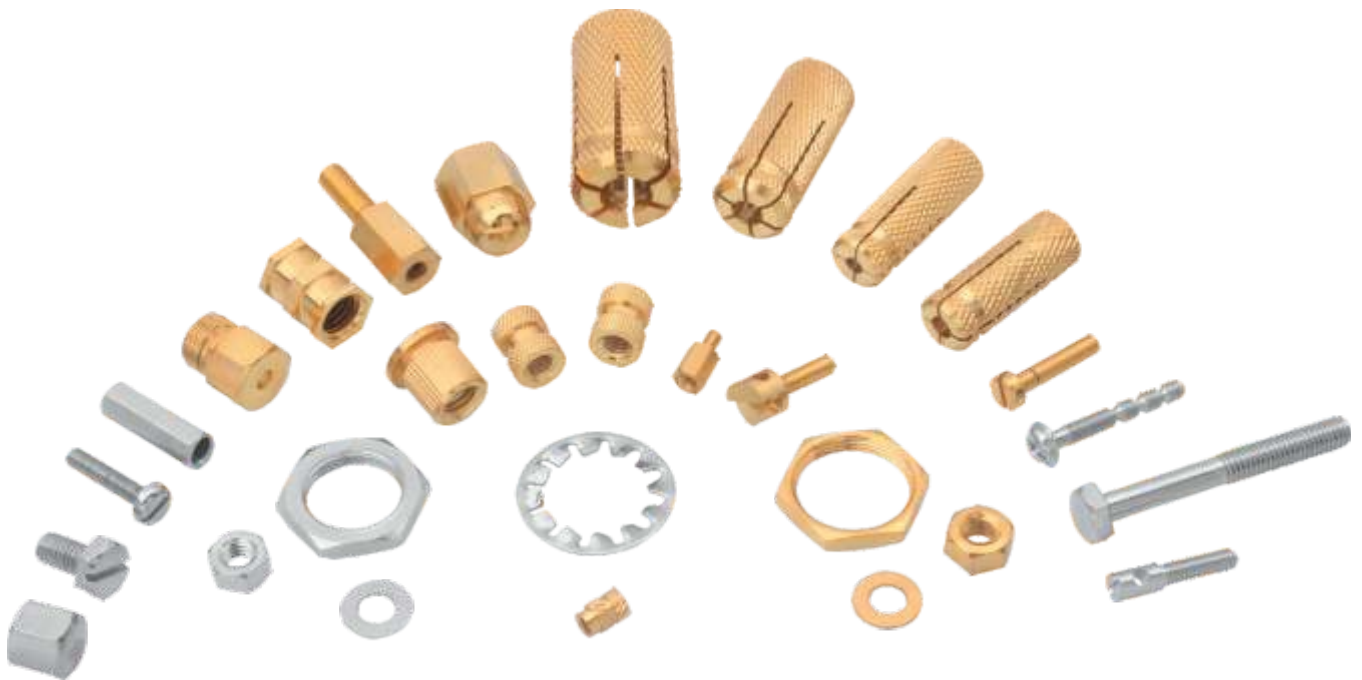
AUTOMOTIVE



ENGINEERING



FASTENERS





CPVC PPR INSERTS



SANITARY

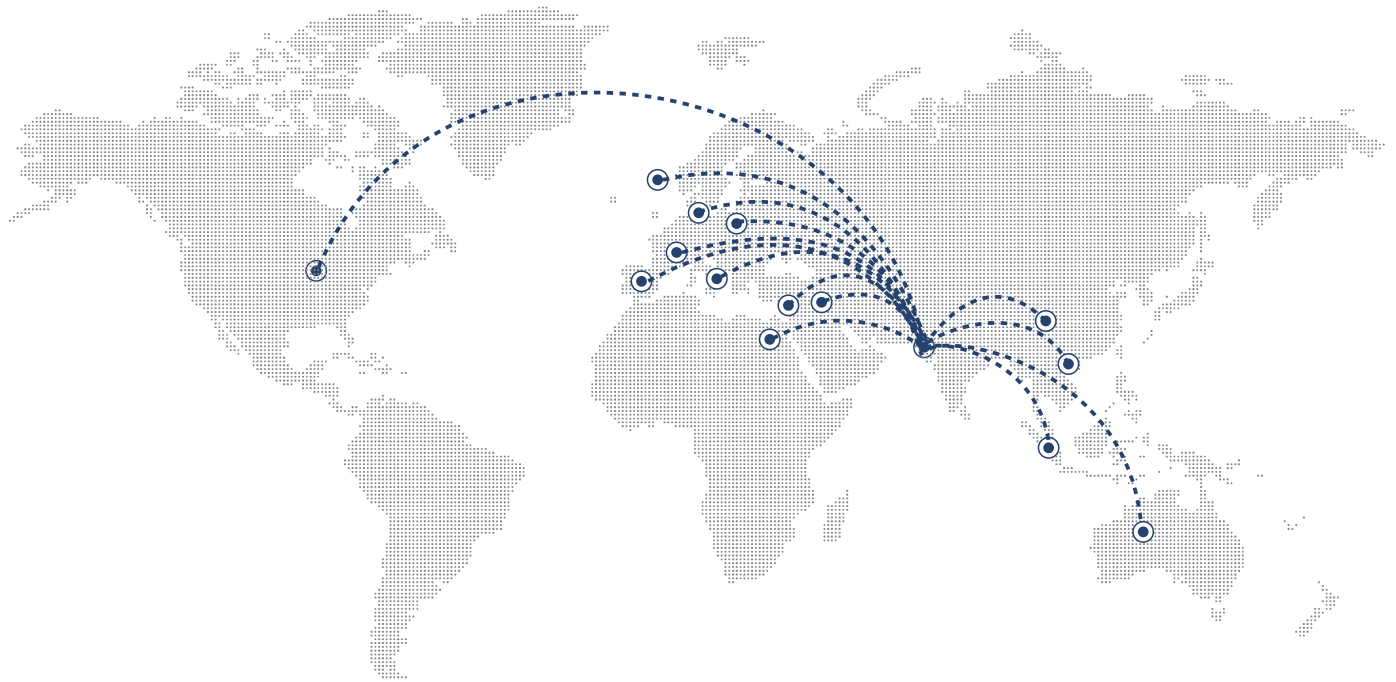


## BRASS PIPE FITTINGS



Brass Pipe Fittings are commonly used for civil construction, chemical, flammable gases, slurries, irrigation, and other plumbing work..... it can effectively control gas and liquid in the pipe and lasts for years.

## Presence across the globe



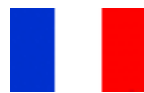
America



Australia



Egypt



France



Germany



Iran



Italy



Jordan



Malaysia



Poland



Saudi



Spain



Switzerland



UAE



United Kingdom

Assuring you a healthy and long-lasting planned business

## OUR VISION

By 2030 **DHL Metal Craft Industries** will be a multi - National Company Subsidiary in USA & Italy. Head Quarters in india

The Manufacturing Process Will be Fully Customised to Overcome Humans Errors.

A Strong and Dedicated R & D Team to Focus on New Ideas and Innovation.

DHL Metal Craft will be Well Known Brand Name around the world & it will signify Innovation and quality Products.

DHL Metal Craft will be stock Listed Company.



Plot No. 4064, Road I, Phase - 3,  
Dared, Jamnagar - 361 005



[sales@dhlmetalcraft.com](mailto:sales@dhlmetalcraft.com)



+91 91067 56157



[www.dhlmetalcraft.com](http://www.dhlmetalcraft.com)

Thank you